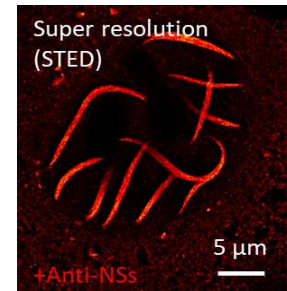




Postdoctoral fellow in immunity, cell biology, and virology

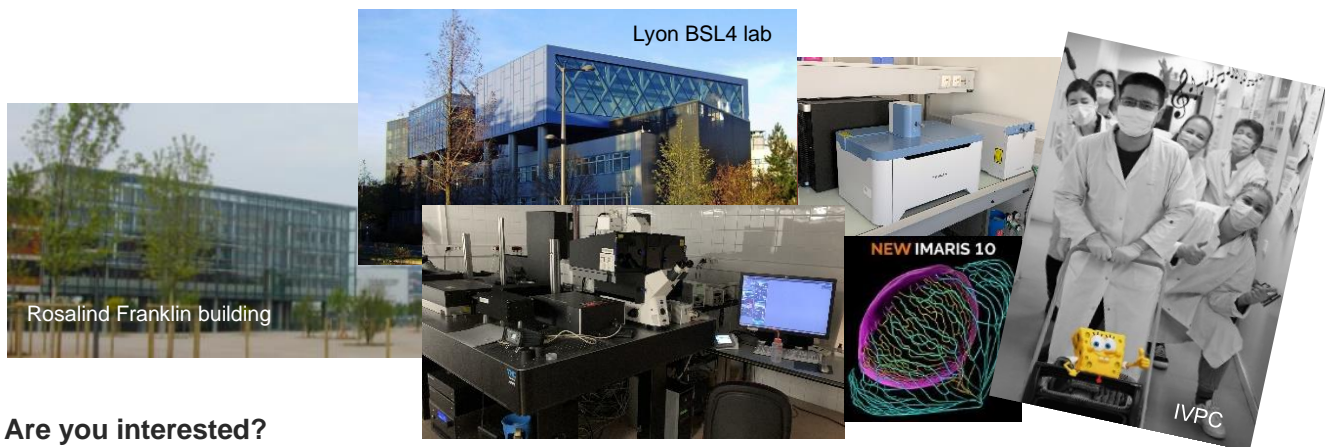
The iWays team (<https://www.lozachlab.com>) is looking to recruit a postdoc to work at the interface of biochemistry, cell biology, and virology to analyze the aggregation of viral proteins and understand the implication for their molecular and cellular functions in relation to diseases associated with viral infections. Our main focus is on the NSs protein of Rift Valley fever virus, which we are studying using a combination of biochemistry/structural biology, genetics, and cell biology approaches [Léger P et al. (2020) Nat Com 11(1):3281 ([here](#)); Peng K et al. (2021) Future Virol 16(10):677-689 ([here](#)); Gondelaud F et al. (2023) Curr Op Struc Biol 83:102706 ([here](#))]. Current projects are supported by third-party grants including the Medical Research Fondation (FRM) and the French National Funding Agency (ANR).



NSs in the nucleus of a RVFV-infected cell.

Qualifications – We seek highly motivated, ambitious, and talented young scientists with a team spirit to join an enthusiastic and collaborative team in an outstanding scientific environment. Successful applicants will hold a Ph.D. in a relevant area, e.g., immunity, cell biology, or virology, and have a strong track record of accomplishment in innate immunity or cell stress responses. Candidates with proven experience in biochemistry, structural studies, and/or proteomics are especially encouraged to apply. All applicants are expected to benefit from excellent written and oral communication skills and display a high personal motivation to excel in science. The working language is English; knowledge of French is not required.

Research Environment – Lyon has a central position in France, well connected to the rest of Europe and the world by its two train stations (Lyon Perrache and Part-Dieu) and international airport (LYS). Direct connections exist between Lyon and Paris, Brussels, Milan, Frankfurt, Amsterdam, Barcelona, Montreal etc. The Viral Infections and Comparative Pathology research unit (IVPC) is part of INRAE-University Claude Bernard Lyon 1 located on the biotech campus of Lyon Gerland, which includes Europe's first biosafety level 4 laboratory. Our campus conducts basic research among others in biochemistry, structural biology, immunology, bacteriology, and virology and provides a vibrant and collaborative environment with state-of-the-art facilities ([click here for more information](#)) for research and employees from all over the world. The iWays team has access to its own qPCR machine, an IMARIS working station, a high-end fluorimeter, a BSL3 lab, etc., and participates in numerous national and international projects (Germany, Canada, China, etc.). We are an inclusive team and offer equal opportunities. We welcome applications from all backgrounds.



Are you interested?

Then please submit your complete application documents, containing a one-page letter with a personal statement describing your interests in our research group, your CV as well as contact information for 3 references, in electronic form as one single pdf-file via e-mail to pierre-yves.lozach@inrae.fr. Applications will be considered as soon as they are submitted until July 30, 2024. The position is available from **September 1, 2024** (or later) and is based on civil service contracts (INRAE).